



Slotted Pilasters

- Pilasters may be fastened to cabinets with screws, staples, nails, or welded to metal.
- Adjustable on 1/2" centers



Surface Mount KV233

13/16" wide x 3/16" high for surface mounting
Price each

Finish	L	Item	1-49	50-99	100+
Brass	24"	KV233BP024	\$1.61	\$1.22	\$.93
Brass	72"	KV233BP072	4.38	3.32	2.53
Brass	96"	KV233BP096	5.46	4.14	3.15
Zinc	36"	KV233ZP036	1.25	.95	.72
Zinc	48"	KV233ZP048	1.73	1.31	.99
Zinc	72"	KV233ZP072	2.52	1.91	1.46
Zinc	96"	KV233ZP096	3.47	2.63	2.00

Nails not included.

Flush Mount KV255

5/8" wide x 3/16" high
for flush or surface mounting

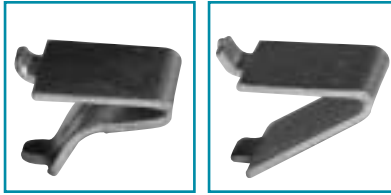


Price each

Finish	L	Item	1-49	50-99	100+
Alum.	18"	KV255AL018	\$1.80	\$1.00	Call
Alum.	24"	KV255AL024	1.99	1.19	Call
Alum.	36"	KV255AL036	2.60	1.85	Call
Alum.	48"	KV255AL048	3.19	2.64	Call
Alum.	60"	KV255AL060	3.33	2.79	Call
Alum.	72"	KV255AL072	3.89	3.11	Call
Alum.	96"	KV255AL096	4.15	3.81	Call
Brass	36"	KV255BP036	3.33	2.79	Call
Brass	48"	KV255BP048	4.15	3.81	Call
Brass	60"	KV255BP060	4.86	4.11	Call
Brass	72"	KV255BP072	5.10	4.61	Call
Brass	96"	KV255BP096	5.71	5.23	Call
White	18"	KV255WH018	2.40	2.05	Call
White	24"	KV255WH024	2.32	1.98	Call
White	36"	KV255WH036	3.33	2.79	Call
Zinc	24"	KV255ZP024	1.99	1.19	Call
Zinc	36"	KV255ZP036	2.60	1.25	Call
Zinc	48"	KV255ZP048	3.19	2.64	Call
Zinc	72"	KV255ZP072	3.89	3.11	Call
Zinc	96"	KV255ZP096	4.15	3.81	Call

Nails not included.

Pilaster Clips & Accessories



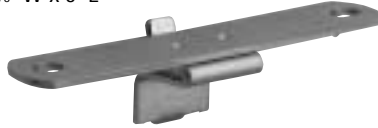
Pilaster Clip-closed FE286 Pilaster Clip-open FE289

Sold & priced per box of 100

Finish	Item	1-9	10+
Closed			
Brass	FE286BP	\$11.99	Call
Zinc	FE286ZP	11.99	Call
Open			
Brass	FE289BP	11.99	Call
Zinc	FE289ZP	11.99	Call

Center Shelf Support

5/8" W x 3" L



Price each

Finish	Item	1-9	10-49	50+
Zinc	KV243	\$2.43	\$1.87	Call

Hangrod End Flange

for 1"-1 1/16" tubing



Price each

Finish	Item	1-9	10-49	50+
Anodized	KV757	\$1.69	\$.89	Call

Plastic Pilaster

- Low cost alternative to metal pilasters for light duty applications.
- Requires mortise: 5/16" wide x 7/32" deep.
- Press fit into place. May be reinforced with staples or adhesive.
- 8' long



DS5-253M

Plastic Clips

- Push in and turn to lock.

DS5-254W8

Price each

Finish	Item	1-9	10-99	100+
White	DS5-254W8	\$4.19	\$2.88	Call

Price per 100

Finish	Item	100-900	Bulk
White	DS5-253M	\$12.00	Call

Shelf Supports



Price/100 Price/1000

Dia.	Finish	Item	100-900	1000-4000	5000+
1/4"	Brass	DSS5-052BPM	\$4.19	\$28.20	Call
1/4"	Zinc	DSS5-052NPM	4.19	28.20	Call
5mm	Brass	DSS5-282BPM	4.99	33.18	Call
5mm	Zinc	DSS5-282NPM	4.99	33.18	Call

Grommets for Shelf Supports



Drill 5/32" hole using brad point bit # AT606-128

Price/100 Price/1000

Steel	Dia.	Finish	Item	100-900	1000-4000	5000+
1/4"	Brass	DSS5-4BPM	\$4.19	\$22.50	Call	
1/4"	Zinc	DSS5-4NPM	4.19	22.50	Call	

L-Shaped Shelf Supports



Price per 100

Dia.	Finish	Item	100-900	Bulk
1/4"	Brass	DSS5-1280BM	\$13.00	Call
1/4"	Zinc	DSS5-1280ZM	13.00	Call

L-Shaped Shelf Supports w/ Vinyl Sleeve



Price per 100

Dia.	Finish	Item	100-900	Bulk
1/4"	Brass	EP521B	\$19.00	Call
1/4"	Zinc	EP521N	19.00	Call

Shelf Supports w/ Steel Pin

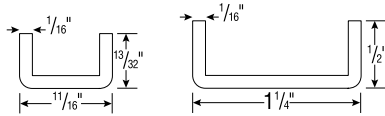
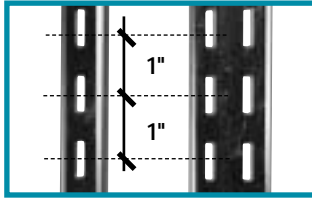


Price/100 Price/1000

Dia.	Finish	Item	100-900	1000-4000	Bulk
5mm	Clear	US805-CL	\$8.99	\$45.00	Call
5mm	White	US805-WT	5.49	35.00	Call

- Check out **Lighting & Wire Management**
- Check out **Closet & Shelving Hardware**

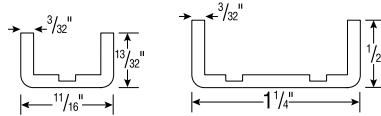
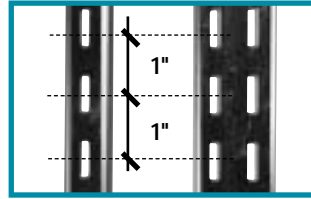
Medium Duty $\frac{1}{16}$ " thick $\frac{1}{2}$ " slots on 1" centers



- Light to medium shelf loads
- Showcases, closet shelves
- Not for hangrods

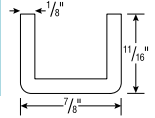
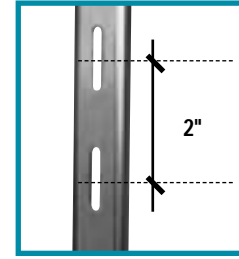
* Double slotted standard accept both single and double blade brackets

Heavy Duty $\frac{3}{32}$ " thick $\frac{1}{2}$ " slots on 1" centers



- One third thicker than medium duty
- For medium to heavy shelf and hangrod loads

Super Heavy Duty $\frac{1}{8}$ " thick 1" slots on 2" centers



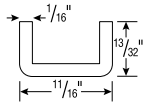
- Strongest standard available.
- Holds very heavy shelf and hangrod loads.
- Recommended for brackets longer than 16"



Standards & Brackets $\frac{1}{2}$ " slots on 1" centers

80 Standard

- Single slotted
- Medium Duty
- $\frac{1}{16}$ " thick



L	Finish	Item	Price each	
			1-49	50+
12"	Anochrome	80-ANO-12	\$2.11	Call
18"	Anochrome	80-ANO-18	2.57	Call
24"	Anochrome	80-ANO-24	2.94	Call
	Brass	80-BR-24	3.04	Call
30"	Anochrome	80-ANO-30	3.33	Call
36"	Anochrome	80-ANO-36	3.44	Call
	Brass	80-BR-36	4.31	Call
48"	Anochrome	80-ANO-48	4.58	Call
	Brass	80-BR-48	5.73	Call
60"	Anochrome	80-ANO-60	5.62	Call
	Brass	80-BR-60	7.18	Call
72"	Anochrome	80-ANO-72	6.40	Call
	Brass	80-BR-72	8.58	Call
84"	Anochrome	80-ANO-84	7.89	Call
96"	Anochrome	80-ANO-96	9.02	Call
	Brass	80-BR-96	11.51	Call

180 Bracket

16-gauge steel construction.



L	Finish	Item	Price each	
			1-49	50+
8"	Anochrome	180-ANO-8	1.82	Call
10"	Anochrome	180-ANO-10	1.98	Call
12"	Anochrome	180-ANO-12	2.20	Call
14"	Anochrome	180-ANO-14	2.49	Call
14"	Brass	180-BR-8		Call
16"	Anochrome	180-ANO-16	2.98	Call
16"	Brass	180-BR-16		Call
18"	Anochrome	180-ANO-18	3.40	Call

160LL Lock Lever Bracket

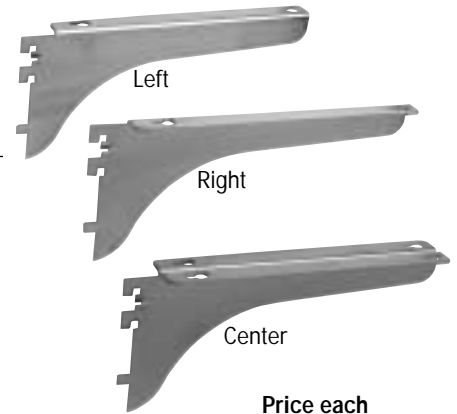
Nylon tightening cams



L	Finish	Item	Price each	
			1-99	100+
6"	Anochrome	160LL-ANO-6	\$2.40	Call
8"	Anochrome	160LL-ANO-8	2.42	Call
10"	Anochrome	160LL-ANO-10	2.71	Call
10"	Brass	160LL-BR-10	3.33	Call
12"	Anochrome	160LL-ANO-12	3.07	Call
12"	Brass	160LL-BR-12	3.47	Call
14"	Anochrome	160LL-ANO-14	3.40	Call
14"	Brass	160LL-BR-14	3.87	Call
16"	Anochrome	160LL-ANO-16	3.91	Call
18"	Anochrome	160LL-ANO-18	4.51	Call

Wood Shelf Brackets

Anochrome finish.



L	Item	Price each	
		1-49	50+
8"	183--ANO-8	\$6.12	Call
10"	183--ANO-10	6.48	Call
12"	183--ANO-12	7.40	Call
14"	183--ANO-14	8.15	Call
16"	183--ANO-16	9.02	Call
18"	183--ANO-18	9.87	Call

To order Left, Right, or Center

Add code to item number

• (L)-left, (R)-right, (C)-center

If you are having trouble finding what you are looking for, please call us at 718-726-8000.



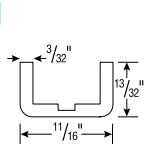
GARCY

Standards

1/2" slots on 1" centers

649 Standard

- Single slotted
- Heavy Duty
- 3/32" thick
- Satin Zinc



L	Item	1-49	50-99	100+
24"	GY64924	\$4.10	\$3.90	\$3.69
36"	GY64936	4.94	4.69	4.45
48"	GY64948	6.16	5.85	5.54
60"	GY64960	7.40	7.03	6.66
72"	GY64972	8.84	8.40	7.96
84"	GY64984	10.28	9.77	9.25
96"	GY64996	11.92	11.32	10.73

Shelving Brackets

1/2" slots on 1" centers

686 Bracket

Thumbscrew tightening. Satin Zinc.

		Price each		
Length	Item	1-49	50-99	100+
10"	GYM68610	\$3.85	\$3.57	\$3.18
12"	GYM68612	3.55	3.22	2.88
14"	GYM68614	3.93	3.55	3.08
16"	GYM68616	4.07	3.70	3.33

Hang Rod Brackets

1/2" slots on 1" centers

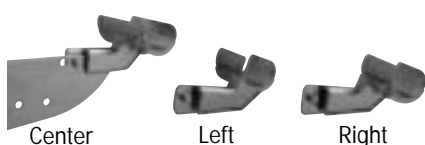
725 Heavy Duty Hangrod Bracket

Use with snap-on attachments. Cam-lock. Satin Zinc

		Price each	
Length	Item	1-49	50+
10"	GY72510	\$6.13	\$5.51
12"	GY72512	6.25	5.63
14"	GY72514	6.73	6.05

Snap-on Attachments

Spring clamp allows hangers to slide unobstructed past bracket. Chrome.



Clamp	1" dia.	1 1/4" dia.	Price each
Center	DC1	DC2	\$4.60
Left	DL1	-	4.30
Right	DR1	-	4.30

Shelving Brackets

1" slots on 2" centers

1237 Bracket Super Heavy Duty

One tooth shelf bracket. Friction fit. Accepts snap-lock shelf rests. Satin Zinc.

		Price each		
L	Item	1-49	50-99	100+
8"	GY123708	\$2.77	\$2.58	\$2.30
10"	GY123710	3.15	2.94	2.62
12"	GY123712	3.44	3.21	2.86
14"	GY123714	3.76	3.51	3.12
16"	GY123716	4.19	3.91	3.48
18"	GY123718	4.77	4.45	3.96

1284 Super Heavy Duty Shelf and Hangrod Bracket

For shelves and hangrods. Accepts snap-lock shelf rests and snap-on attachments for hangrods. Thumbscrew is removable for use with concealed standards. Satin Zinc.

		Price each		
L	Item	1-49	50-99	100+
6"	GY128406	\$4.46	\$4.16	\$3.70
8"	GY128408	4.52	4.22	3.76
10"	GY128410	4.79	4.47	3.98
12"	GY128412	5.33	4.98	4.43
14"	GY128414	5.69	5.31	4.73
16"	GY128416	6.32	5.90	5.25
18"	GY128418	7.02	6.55	5.83
20"	GY128420	7.85	7.33	6.53
22"	GY128422	8.64	8.06	7.18
24"	GY128424	9.95	9.28	8.27

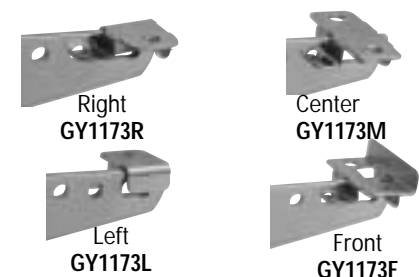
Shelving Brackets

1" slots on 2" centers

Snap-lock Shelf Rests

Hook-on clip inserts into hole on bracket and locks in place. Use **rubber cushions** (#GY105) for glass shelves.

Laminated/wood shelves are secured to bracket with wood screws thru holes in shelf clips. \$0.45 ea.



Shelving Brackets

1/2" slots on 1" centers

796 Bracket

Cam-lock tightening. Satin Zinc.

		Price each	
Length	Item	1-49	50+
6"	GY79606	\$2.18	Call
8"	GY79608	2.32	Call
10"	GY79610	2.54	Call
12"	GY79612	2.77	Call
14"	GY79614	2.97	Call

		Price each	
Length	Item	1-49	50+
12"	GYM79612	\$4.78	Call
14"	GYM79614	5.02	Call
16"	GYM79616	5.27	Call
18"	GYM79618	5.70	Call
20"	GYX79620	7.32	Call
22"	GYX79622	8.86	Call

M276 Snap-Lock Shelf Clip

Lock into holes in Garcy Brackets.

Use with screws for wood shelves or with rubber cushions for glass shelves.

Center style, Bright Zinc



Item	1-49	50+
GY276M	\$0.59	Call

Rubber Cushion

Use with shelf rests for glass shelves

Item	Price each
GY105	\$0.08



Standards

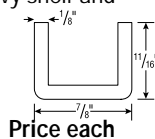
1" slots on 2" centers

1204 Standard

Super Heavy Duty Standards

1/8" thick

- Holds very heavy shelf and hangrail loads.
- For long shelf brackets
- Satin Zinc.



		Price each		
L	Item	1-24	25-99	100+
24"	GY120424	\$6.08	\$5.67	\$5.40
36"	GY120436	7.61	7.10	6.76
48"	GY120448	9.45	8.82	8.40
60"	GY120460	11.77	10.98	10.46
72"	GY120472	14.06	13.13	12.50
84"	GY120484	15.86	14.81	14.10
96"	GY120496	18.16	16.95	16.14



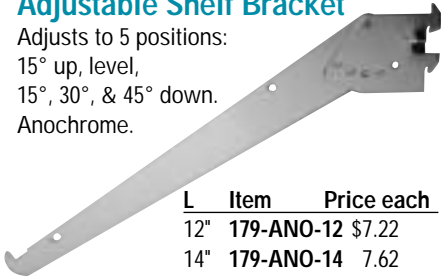
- Check out Door Hinges & Pivots
- Check out Table Hardware

Shelving Brackets

½" slots on 1" centers

Adjustable Shelf Bracket

Adjusts to 5 positions:
15° up, level,
15°, 30°, & 45° down.
Anochrome.



L	Item	Price each
12"	179-ANO-12	\$7.22
14"	179-ANO-14	7.62

Side Mount Bracket

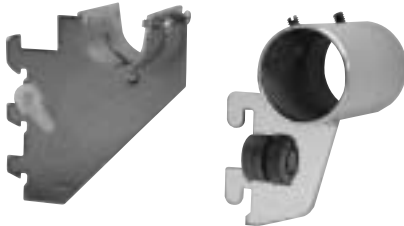
Chrome. Use with standards that face each other.



Tube Dia.	Item	Price ea.	1-47	48+
1"	5639-1	\$2.90	\$2.60	
1¼"	5639-5	3.90	3.10	

Stub Bracket

Chrome. (rear mount)



For 1" dia. round tubing. Price ea.

Style	Item	1-47	48+
"U" Cup	5632-1	\$4.60	Call
Welded Tube	BS10	5.40	Call

For 1¼" dia. round tubing. Price ea.

Style	Item	1-47	48+
"U" Cup	5632-5	\$4.60	Call
Welded Tube	BS20	5.40	Call



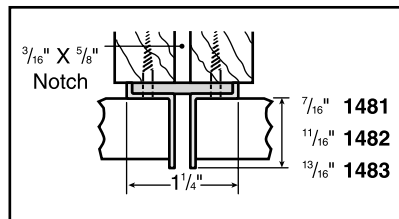
Call us for your
Aluminum Slatwall Inserts

If you don't see
what you're
looking for,
please call us at
718-726-8000

GARCY

Concealed Standard Super Heavy Duty 1" slots on 2" centers

- Steel standard for flush mounting of drywall or panels.
- Only a slim slot is visible in completed installation.
- Counter-sunk screw holes provided every 10".
- Material at back is ⅝" thick.
- The width at the back is 1¼" wide.
- Finish is black enamel.
- Use thumbscrew type brackets without stabilizer to fit recessed slots.



Drywall/Panel thickness

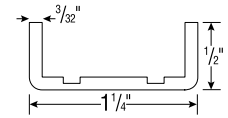
L	(⅞" lip)	(1 1/8" lip)	(1 3/8" lip)	price ea.
6 ft.	GY148172	GY148272	GY148372	\$28.00
7 ft.	GY148184	GY148284	GY148384	31.00
8 ft.	GY148196	GY148296	GY148396	35.00

Standards & Brackets

Double Slotted Heavy Duty Standard



- 3/32" thick
- Anochrome



Price each

L	Item	1-19	20+
24"	85-ANO-24	\$3.80	Call
36"	85-ANO-36	5.73	Call
48"	85-ANO-48	7.69	Call
60"	85-ANO-60	9.47	Call
72"	85-ANO-72	11.47	Call
84"	85-ANO-84	13.24	Call
96"	85-ANO-96	15.22	Call



Double Blade Bracket

Holes between blades for wood shelf screws. Satin Zinc.



L	Item	1-49	50+
10"	185-ANO-10	\$6.93	Call
12"	185-ANO-12	7.40	Call
14"	185-ANO-14	7.80	Call
16"	185-ANO-16	8.27	Call
18"	185-ANO-18	8.87	Call
20"	185-ANO-20	9.84	Call
22"	185-ANO-22	14.00	Call
24"	185-ANO-24	14.82	Call

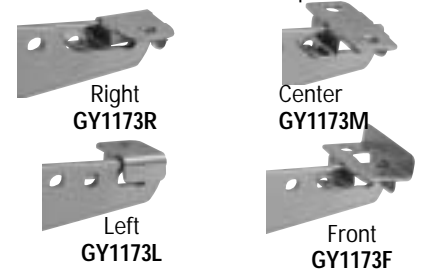
GARCY

Shelving Brackets

1" slots on 2" centers

Snap-lock Shelf Rests

Hook-on clip inserts into hole on bracket and locks in place. Use **rubber cushions** (#223) for glass shelves. Laminated/wood shelves are secured to bracket with wood screws thru holes in shelf clips. \$0.45 ea.



Rubber Cushion

Use with shelf rests for glass shelves

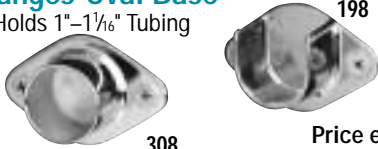
Item	Price each
GY105	\$0.08





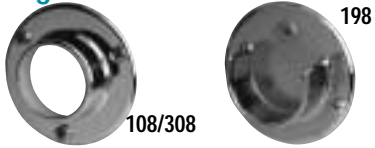
Flanges-Oval Base

- Holds 1"-1 1/16" Tubing



Finish	Item	Price ea.		
		1-49	50-99	100+
Chrome-"O"	TUF308ACH	\$1.79	\$1.39	Call
Brass-"O"	TUF308ABP	2.99	2.49	Call
Chrome-"U"	TUF198ACH	1.49	1.19	Call
Brass-"U"	TUF198ABP	2.99	2.49	Call

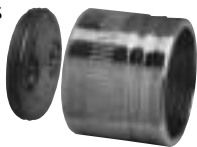
Flanges-Round Base



Finish	Item	Price ea.		
		1-49	50-99	100+
1"-1 1/16" dia.				
Chrome-"O"	TUF108CH	\$1.59	\$1.19	Call
Brass-"O"	TUF108BP	2.99	2.49	Call
1 1/4"-1 5/16" dia.				
Chrome-"O"	TUF308BCH	1.79	1.39	Call
Brass-"O"	TUF308BBP	2.99	2.49	Call
Chrome-"U"	TUF198BCH	1.89	1.49	Call
Brass-"U"	TUF198BBP	2.99	2.49	Call
32 mm Flanges				
Chrome-"O"	114C032	2.10	1.67	Call
Brass-"O"	114B032	2.10	1.67	Call
Chrome-"U"	114CC32	2.10	1.67	Call
Brass-"U"	114BC32	2.10	1.67	Call

Two Piece Socket

- Tube holder screws onto threaded wall mount



Finish	Item	Price ea.		
		1-9	10-99	100+
1"-1 1/16" dia.				
Chrome	TUF3369ACH	\$5.99	\$4.67	Call
Brass	TUF3369ABR	5.99	4.67	Call
1 1/4"-1 5/16" dia.				
Chrome	TUF3369BCH	5.99	\$4.67	Call
Brass	TUF3369BBR	5.99	4.67	Call

Round Tubing Endcaps

Prevent hangers from sliding off tube.



Chrome Tube dia.	Item	Price ea.		
		1-9	10-99	100+
1"	EK1	\$1.45	\$.99	Call
1 1/4"	EK5	1.45	.99	Call

Heavy Duty Chrome Tubing



1" diameter, chrome,		Price ea.		
Length	Item	1-49	50-99	100+
8 ft.	TUB100096	\$11.04	\$8.29	Call
10 ft.	TUB100120	13.80	10.39	Call
12 ft.	TUB100144	16.56	12.49	Call

1 1/4" diameter, chrome,		Price ea.		
Length	Item	1-49	50-99	100+
8 ft.	TUB125096	\$11.84	\$8.99	Call
10 ft.	TUB125120	14.80	11.29	Call
12 ft.	TUB125144	17.76	13.49	Call

Lengths can be mixed and matched for quantity pricing. Chrome tubing cut to size (\$2.50 per cut) will be charged at next standard length. Recommended maximum unsupported span: 1" dia-5ft; 1 1/4" dia.-6ft. Lengths over 8 ft. require truck shipment.

Heavy Duty Brass Tubing

Stocked in 12 ft lengths only*



Dia.	Item	Price ea. (12 ft. long)	
		1-99	100+
1"	PH245SB1	\$42.00	\$36.00
1 1/4"	PH245SB114	48.00	39.00
1 1/2"	PH245SB112	53.00	44.00
2"	PH245SB2	62.00	52.00

Tie & Belt Rack

Black with chrome. 12 tie hooks and 6 belt hooks. 16 1/2"W x 2 1/2"H x 4 1/4"D.



Item	Price ea.	
	1-9	10+
EGO-9	\$31.00	Call

Shelf & Rod Support

Holds a 10" deep shelf, Hangrod up to 1 1/8" dia. is 11" from the wall.



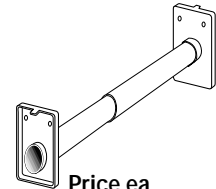
Item	Price ea.		
	1-24	25-49	50+
FE595	\$3.35	\$2.60	\$2.14

Adjustable Closet Rod

Removable edge tab for easy installation.



Zinc plated. Screws included.

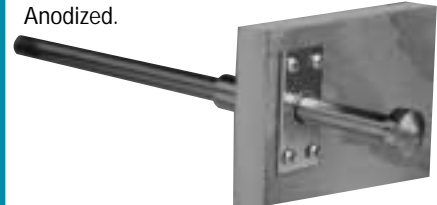


Length	Item	Price ea.		
		1-19	20-49	50+
18"-30"	SH70521830	7.61	6.76	5.92
30"-48"	SH70523048	10.13	9.00	7.88
48"-72"*	SH70524872	14.18	12.60	11.03

* Includes center support

Pull Out Hang Rod

Extends 8". Requires 7/8" hole 9" deep. Anodized.



Item	Price ea.		
	1-24	25-49	50+
KV753	\$11.83	\$10.64	\$9.46

KV3

Utility Hook



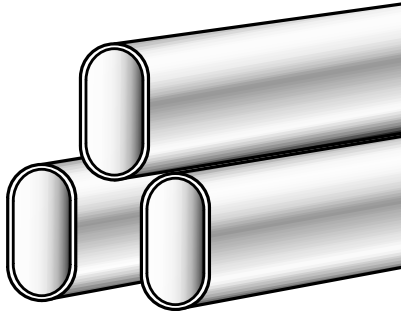
Sturdy steel rod for extra hanging space. Anochrome finish. 3/16" holes. Supplied with #10-1" FH screws



Length	Item	Price each		
		1-9	10-49	50+
5 1/2"	KV3-05	\$8.78	\$7.90	\$7.02
10"	KV3-10	8.95	8.06	7.16

Oval Tubing

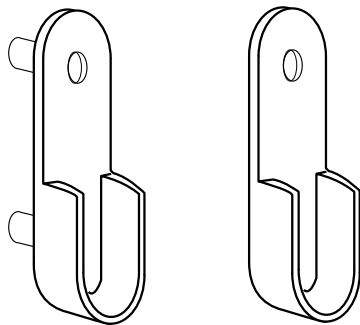
- Measures: 1mm thick, 15mm wide x 30mm high x 8' long.
- Seamless.
- Available in Chrome or Brass.



Finish	Item	Price ea.	
		1-9	10+
Chrome	RO30X15CP8	\$9.00	Call
Brass	RO30X15BP8	11.00	Call

Oval Tubing Supports

- Available in two styles: With Dowels or Screw Mount.
- Available in Chrome or Brass.



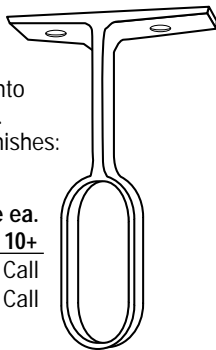
Dowel Mount

Screw Mount

Finish	Mounting	Item	Price ea.	
			1-9	10+
Chrome	Dowel	83391C	\$1.99	Call
Brass	Dowel	83391B	1.99	Call
Chrome	Screw	83392C	1.99	Call
Brass	Screw	83392B	1.99	Call

Oval Tubing Center Support

- May be screwed into shelf above tubing.
- Available in two finishes: Chrome or Brass



Finish	Item	Price ea.	
		1-9	10+
Chrome	661C	\$2.99	Call
Brass	661B	2.99	Call

Locking Shelf Clips

A.
For shelves
3/4" thick



B.&C.
For shelves
1/2"-3/4" thick

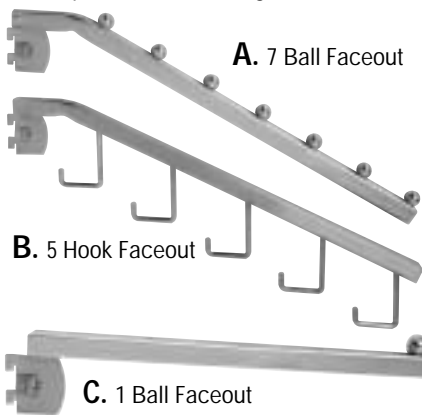


Sold 100 pieces per box

Dowel Size	Item	Price each		
		100-900	1000-1900	2000+
A. 5mm	DSISWHTCLIP	.45	.38	.30
B. 5mm	PX50631	.45	.38	.30
C. 1/4"	PX5072	.48	.41	.35

Garment Faceouts 1/2" slots on 1" centers

- 3/8" Square chrome tubing



A. 7 Ball Faceout

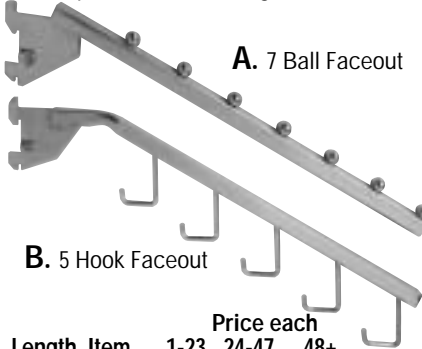
B. 5 Hook Faceout

C. 1 Ball Faceout

Length	Item	Price each		
		1-23	24-47	48+
A. 18"	BS7B	\$3.70	\$3.40	\$3.10
B. 18"	HS5H	3.70	3.40	3.10
C. 12"	TS12	2.60	2.45	2.20

Garment Faceouts 1" slots on 2" centers

- 3/8" Square chrome tubing



A. 7 Ball Faceout

B. 5 Hook Faceout

Length	Item	Price each		
		1-23	24-47	48+
A. 18"	TR7B	\$3.70	\$3.40	\$3.10
B. 18"	TR5H	3.70	3.40	3.10

Double Blade Shelf Brackets 1/2" slots on 1" centers



Size	Finish	Item	Price Each		
			1-19	20-49	40+
10 1/2"	White	KV9003	\$4.43	\$3.72	\$3.36
10 1/2"	Black	KV9003BL	4.43	3.72	3.36
12 1/2"	White	KV9005	5.15	4.33	3.91
12 1/2"	Black	KV9005BL	5.15	4.33	3.91
14 1/2"	White	KV9004	5.70	4.79	4.33
14 1/2"	Black	KV9004BL	5.70	4.79	4.33

HEAVY DUTY BRACKETS*

14 1/2"	White	KV9004H	8.15	6.85	6.19
14 1/2"	Black	KV9004HBL	8.15	6.85	6.19
18 1/2"	White	KV9006H	11.23	9.43	8.53
18 1/2"	Black	KV9006HBL	11.23	9.43	8.53
24"	White	KV9021H	14.90	12.52	11.32
24"	Black	KV9021HBL	14.90	12.52	11.32

SPECIAL ORDER ONLY*

Double Slotted Medium Duty Standard 1/2" slots on 1" centers

- 1/8" thick



Length	Finish	Item	Price Each		
			1-19	20-49	40+
39 1/2"	White	KV9013	9.40	7.90	7.14
39 1/2"	Black	KV9013BL	9.40	7.90	7.14
48"	White	KV9014	11.88	9.98	9.03
48"	Black	KV9014BL	11.88	9.98	9.03
78"	White	KV9018	15.73	13.21	11.95
78"	Black	KV9018BL	15.73	13.21	11.95
96 1/2"	White	KV9020	18.53	15.56	14.08
96 1/2"	Black	KV9020BL	18.53	15.56	14.08